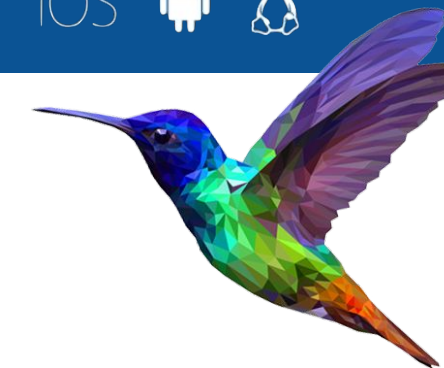


Getting Started with InterBase... and **RAD Studio**



INTERNET OF THINGS AWARDS
WINNER

Most innovative use of data



<p>What is InterBase?</p>	<p>InterBase 2020 is a full-featured, high performance, and small- footprint, relational database that software developers can embed directly into their software applications. The award winning database, protects your systems with secure encrypted data storage, point-in-time recovery, logless field level change tracking that scales to 1,000's of devices and more, all in a powerful lightweight, embeddable, admin-free database. Trusted by ISVs globally, and with a strong presence in medical systems, you know with InterBase you can Embed, Deploy and Relax!</p>		
<p>Installing InterBase</p>	<p>The FREE Developer Edition of InterBase can be installed from inside the RAD Studio IDE. Under "Tools" > "Manage Platforms" > "Additional Options" select "InterBase Developer Edition" - Alternatively visit interbase.com By default, InterBase installs on port 3050. Once installed, you can start/stop InterBase by launching "InterBase Server Manager".</p>	<ul style="list-style-type: none"> • The Developer edition uses the same install as the full Server edition. The developer edition license supports up to 20 users (80 concurrent connections), and supports DES encryption. • The Developer edition limits connections to 48hr. Simply restart InterBase to carry on. • ToGo Libraries are installed alongside RAD Studio. 	
<p>First steps in RAD Studio</p>	<p>A great resource list is http://docwiki.embarcadero.com/RADStudio/en/InterBase Samples : There are InterBase examples (FireDAC / IBX) in the RAD Studio Samples folder. You can add the samples using "Tools" > "Manage Platforms" > "Additional Options" Data Explorer : Add you InterBase database to the Data Explorer, you can then drag and drop the connection into your application for rapid prototyping.</p>	<p>ToGo: RAD Studio Enterprise and Architect Editions include distribution licensing for ToGo on Android and iOS. Register your ToGo license at reg.embarcadero.com and put the license into the redist folder. When starting your app, under "Project" > "Deployment" > "Feature Files" add InterBase http://docwiki.embarcadero.com/RADStudio/en/Mobile_Tutorial:_Using_InterBase_ToGo_with_FireDAC_(iOS_and_Android)</p>	
<p>Tooling</p>	<p>There are a number of tools to connect to InterBase quickly to see and work with data.</p> <ul style="list-style-type: none"> • IBConsole - Found in the InterBase install (or via Start menu) This Windows based tool allows you to do everything from creating and managing a database, to managing a list of databases, creating users, domain, stored procedures, triggers, generators, run server or database performance monitoring and more... 	<ul style="list-style-type: none"> • CMD line tools - Part of the Install, they help you set up batch files to do admin tasks from the CMD line. The cmd line tools are part of Windows and Linux installs. • DataExplorer - You can connect to InterBase directly from the RAD Studio IDE using the Data Explorer, or with the live preview inside the FireDAC components • Aqua Data Studio - You will find support for InterBase inside Aqua Data Studio (A powerful database IDE that connects to leading databases) th included in RAD Studio Architect Edition 	
<p>Documentation</p>	<p>The official InterBase documentation is online at http://docwiki.embarcadero.com/ This includes Getting Started guides, How to use IBConsole, Tutorials for setting up over the wire (OTW) encryption, Connecting to InterBase from different IDE's and more...</p>	<ul style="list-style-type: none"> • Operations Guide • Data Definition Guide • Developer's Guide 	<ul style="list-style-type: none"> • API Guide • Embedded SQL Guide • Language Reference Guide <p>Interested in how others are using InterBase? Check out interbase.com/case-studies</p>
<p>Support</p>	<p>If you need support with registration or Installation, or for any licensed product with an active support agreement visit https://www.embarcadero.com/support For general help and comments, check out https://blogs.embarcadero.com/community/ for links to online communities e.g. StackOverflow https://stackoverflow.com/questions/tagged/interbase</p>		
<p>Deploying InterBase</p>	<p>InterBase Server is loved by ISVs as it offers simple (and optionally silent) installation that is done in seconds without complex configuration. This makes it ideal for embedding into your application installer. License keys or files can be used to register the product automatically so your customers don't even know its there!</p> <p>InterBase Desktop, uses the same binaries as InterBase server and IBLite uses the same binaries as InterBase ToGo. The only difference between the two is the license file. To start using the Silent Installation options for InterBase, please, contact Sales to speak with an ISV Partner Managers.</p>	<p>InterBase ToGo provides libraries that embed into your application giving you the full power of InterBase inside your app, without the installation of a server. The license file is automatically located at runtime to get InterBase running.</p>	